

Firestone BUILDING PRODUCTS

QuickSeam™ FormFlash™

Firestone Item Number:

9": W56RAC1650

12": W56RAC1653

18": W56RAC162A

DESCRIPTION:

QuickSeam FormFlash consists of uncured FormFlash factory laminated to QuickSeam Tape. It is designed to flash inside and outside corners, pipes, penetration pockets and other applications as required by Firestone Specifications and Details.

METHOD OF APPLICATION:

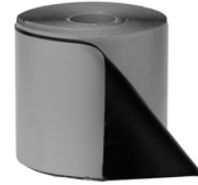
1. Use QuickPrime™ Plus and a QuickScrubber™ or QuickScrubber Plus pad and handle to clean and prime mating surfaces. Refer to Firestone Installation Instruction Sheet for QuickSeam FormFlash (included in each carton) and Firestone Specifications and Details.
2. When cloudy conditions below 60 °F (15.6 °C) occur, use heat guns (without ignition sources) to heat QuickSeam FormFlash. This will ensure good formability of the QuickSeam FormFlash to the primed substrate.
3. On sunny days less than 70 °F (21.1 °C), place QuickSeam FormFlash on roof (prior to application) with flashing side up to allow QuickSeam FormFlash to warm to ensure good formability.
4. On sunny days greater than 70 °F (21.1 °C), place QuickSeam FormFlash on roof (prior to application) with release paper side up to prevent QuickSeam FormFlash from gaining too much heat and to ensure good formability.
5. Refer to application instructions for specifics: Technical Database, www.firestonebpco.com

PHYSICAL PROPERTIES:

QUICKSEAM TAPE

<u>Property</u>	<u>Minimum Performance</u>
Base:	Rubber Polymer
Color:	Black
Solvents:	None
Percent Solids:	100%
Cure State:	Cured
Thickness:	0.025" (0.635 mm) ± 0.007" (0.18 mm)

This sheet is meant to highlight Firestone's products and specifications and is subject to change without notice. Firestone takes responsibility for furnishing quality materials, which meet Firestone's published product specifications. Neither Firestone nor its representatives practice architecture. Firestone offers no opinion on and expressly disclaims any responsibility for the soundness of any structure. Firestone accepts no liability for structural failure or resultant damages. Consult a competent structural engineer prior to installation if the structural soundness or structural ability to properly support a planned installation is in question. No Firestone representative is authorized to vary this disclaimer.



EPDM FLASHING

<u>Property</u>	<u>Minimum Performance</u>
Base:	EPDM
Color:	Black
Solvents:	None
Percent Solids:	100%
Cure State:	Uncured
Thickness:	0.065" (1.6 mm) ± 0.005" (0.13 mm)

PACKAGING:

- 9" (228.6 mm) x 50' (15.2 m) rolls, 2 rolls per carton, 40 cartons per pallet
- 12" (3-4.8 mm) x 50' (15.2 m) rolls, 1 roll per carton, 36 cartons per pallet
- 18" (457.2 mm) x 50' (15.2 m) rolls, 1 roll per carton, 24 cartons per pallet

NOTE: QuickScrubber and/or QuickScrubber Plus pads and handles are included in each carton. Quantities vary depending on the QuickSeam product.

SHELF LIFE:

- Shelf life of one year can be expected when stored in original container at temperatures between 60 °F (15.6 °C) and 80 °F (26.7 °C).
- Shelf life will be shortened if exposed to elevated temperatures.

STORAGE:

- Store in original unopened containers indoors at temperatures between 60 °F (15.6 °C) and 80 °F (26.7 °C).
- Do not store on roof in direct sunlight or at temperatures above 80 °F (26.7 °C).
- When exposed to lower temperatures; restore to room temperature prior to use.

PRECAUTIONARY DATA:

Refer to Material Safety Data Sheet (MSDS).

LEED INFORMATION:

Post Consumer Recycled Content:	0%
Post Industrial Recycled Content:	0%
Manufacturing Locations:	Prescott, AR

PATENTS:

The products described herein, or the methods of their use, may be covered by one or more of the following United States Patents: 5,242,727; 5,520,761; 5,804,661; 5,976,292; 5,985,981; 6,426,129.

Firestone Building Products Company
250 W. 96th Street, Indianapolis, IN 46260
Sales: (800) 428-4442 • Technical (800) 428-4511
www.firestonebpco.com